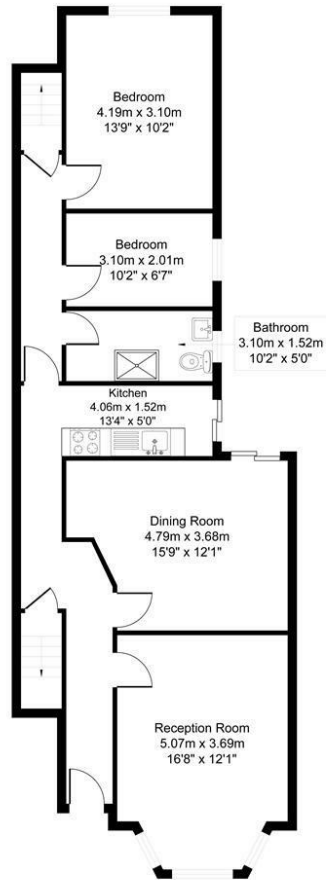


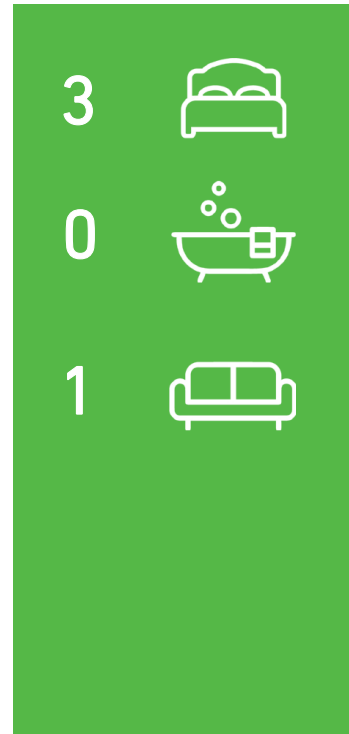
**£1,600**  
**Lansdowne Road**  
London, N17 0NN

EPC RATING: COUNCIL TAX BAND:

123 Lansdowne Road N17 0NN



Approximate Gross Internal Area = 83.26 sq m /896.20 sq ft  
Illustration for identification purposes only, measurements are approximate, not to scale



Energy Efficiency Rating		Current	Potential
Very energy efficient - lower running costs			
(92 plus) <b>A</b>			
(81-91) <b>B</b>			
(69-80) <b>C</b>			
(55-68) <b>D</b>			
(39-54) <b>E</b>			
(21-38) <b>F</b>			
(1-20) <b>G</b>			
Not energy efficient - higher running costs			
<b>England &amp; Wales</b>		EU Directive 2002/91/EC	



Agents Note: Whilst every care has been taken to prepare these particulars, they are for guidance purposes only. All measurements are approximate and are for general guidance purposes only and whilst every care has been taken to ensure their accuracy, they should not be relied upon and potential buyers/tenants are advised to recheck the measurements



OFFICE ADDRESS  
786-788 Green Lanes  
London  
N21 3RE

OFFICE DETAILS  
0208 800 1155  
management@paul-simon.co.uk